

ASCENSION



NATIONAL PROTECTED AREAS ORDINANCE, CAP. A20

NATIONAL PROTECTED AREAS ORDER 2014

In the exercise of the powers conferred by section 3 of the National Protected Areas Ordinance, Cap A20, the Governor makes the following Order:

Citation and commencement

1. This Order may be cited as the National Protected Areas Order, 2014, and shall come into force on 28 July 2014

Certain areas to be National Protected Areas

2. (1) The area named and described in Part I of the Schedule is declared to be a national park.

(2) The areas named and described in Part II of the Schedule are declared to be nature reserves.

(3) The area named and described in Part III of the Schedule is declared to be a sanctuary.

(4) The area named and described in Part IV of the Schedule is declared to be an area of historical interest.

Site Plans

3. (1) The areas described in the Schedule are delimited on site plans designated, NP1, NR1-6, S1 and AHI1, that may be inspected free of charge at the offices of the Conservation Department during normal working hours.

(2) In case of inconsistency between the description of an area in the Schedule and its delimitation on a site plan, the former shall prevail for all purposes of interpretation.

Revocation

4. The Green Mountain National Park Order, 2008, is revoked.

SCHEDULE

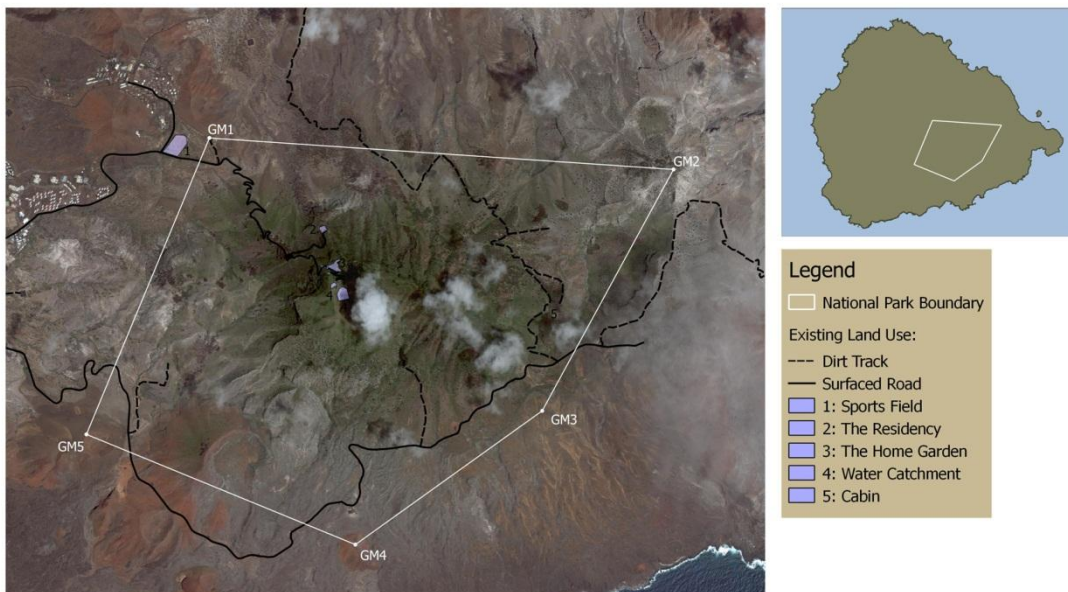
Part I

National Park

1. Green Mountain National Park:

An area bounded on the north by a straight line from Two Boats (N 9122332 E 570510) to the summit of Weather Post (N 9122079 E 574325); on the east by a straight line from Weather Post to the summit of Castle Hill (N 9120255 E 573301); on the south by a straight line from Castle Hill to South East Crater (N 9119021 E 571716) thence by a straight line to the summit of Spoon Crater (N 9119911 E 569502); on the west by a straight line from Spoon Crater to Two Boats.

Site Plan NP1



Part II

Nature Reserves

2. Long Beach Nature Reserve:

An area bounded on the north by a straight line between reference point LB1 (N 9124793 E 565284) and reference point LB2 (N 9124416 E 565767) and thence by a straight line to reference point LB3 (N 9124140 E 565914); on the east by a straight line between reference point LB3 and reference point LB4 (N 9123784 E 565436); on

the south by straight lines between reference points LB4 and LB5 (N 9123900 E 565084), reference points LB5 and LB6 (N 9123860 E 564946), reference points LB6 and LB7 (N 9123969 E 564899) and reference points LB7 and LB8 (N 9124024 E 564843); on the west by a straight line between reference point LB8 and reference point LB1.

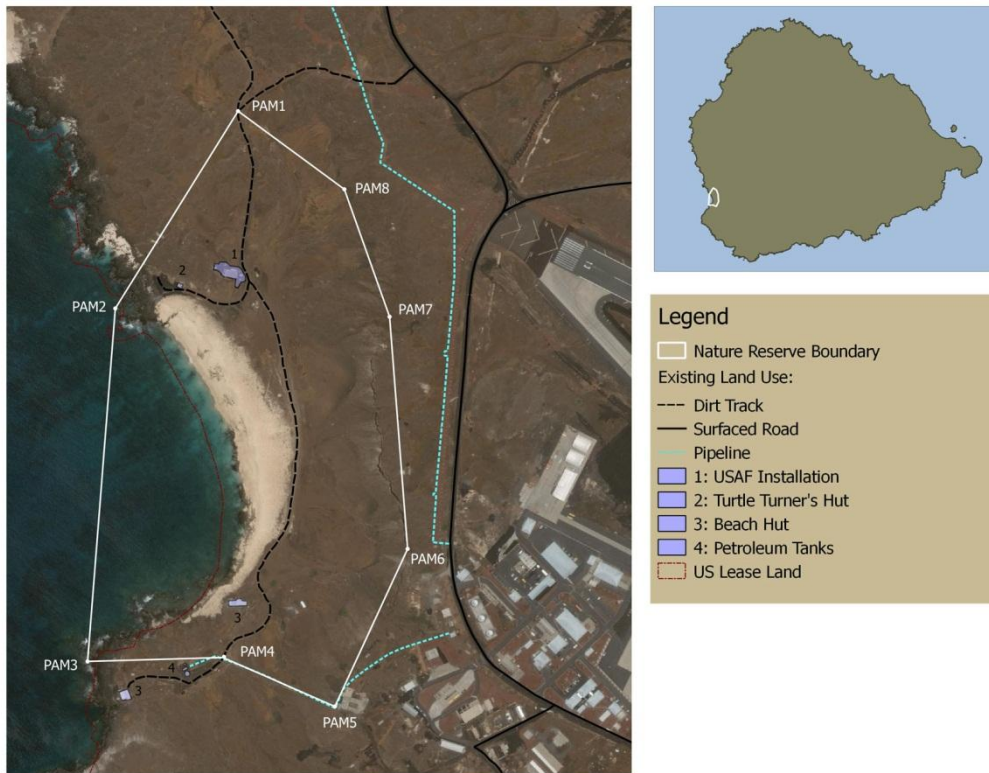
Site Plan NRI



3. South West Bay Nature Reserve:

An area bounded on the west by a straight line between reference point PAM1 (N 9119901 E 564984) and reference point PAM2 (N 9119611 E 564803) and thence by a straight line to reference point PAM3 (N 9119089 E 564762); on the south by a straight line between reference point PAM3 and reference point PAM4 (N 9119096 E 564963) and thence by a straight line to reference point PAM5 (N 9119022 E 565127); on the east by straight lines between reference points PAM5 and PAM6 (N 9119254 E 565235), PAM6 and PAM7 (N 9119599 E 565209), PAM7 and PAM8 (N 9119786 E 565140), and PAM8 and PAM1.

Site Plan NR2



4. North East Bay Nature Reserve:

An area bounded to the north by a straight line between reference point NEB1 (N 9125436 E 572542) and reference point NEB3 (N 9125238 E 573181); to the east by a straight line between reference point NEB3 and reference point NEB4 (N 9125027 E 573082) and thence by a straight line to reference point NEB5 (N 9124890 E 572883); to the south by a straight line between reference point NEB5 and reference point NEB6 (N 9124710 E 572197); to the west by a straight line between reference point NEB6 and NEB7 (N 9124908 E 572046) and thence by a straight line to reference point NEB1.

Site Plan NR3



5. Letterbox Peninsula Nature Reserve:

An area bounded by a straight line between Spire Beach (N 9122886 E 575202) and the summit of White Horse hill (N 9121684 E 575277), a straight line between the summit of White Horse hill and Crater Cliff (N 9120170 E 575790), and the coastline running in an easterly direction from Crater Cliff to Spire Beach.

Site Map NR4



6. Mars Bay Nature Reserve:

An area bounded to the west by a straight line between reference points MB1 (N 9117494 E 565073) and MB2 (N 9118328 E 565735); to the north by a straight line between reference points MB2 and MB3 (N 9118328 E 566779); to the east by a straight line between reference points MB3 and MB4 (N 9116768 E 567446); to the south by the coastline running in a westerly direction between reference points MB4 and MB1.

Site Map NR5



7. Waterside Fairs Nature Reserve:

An area bounded to the west by a straight line between reference points WF1 (N 9116844 E 567863) and WF2 (N 9117983 E 568430); to the north by a straight line between reference points WF2 and WF3 (N 9118141 E 569621); to the east by a straight line between reference points WF3 and WF4 (N 9117606 E 570474); to the south by the coastline running in a westerly direction between reference points WF4 and WF1.

Site Map NR 6



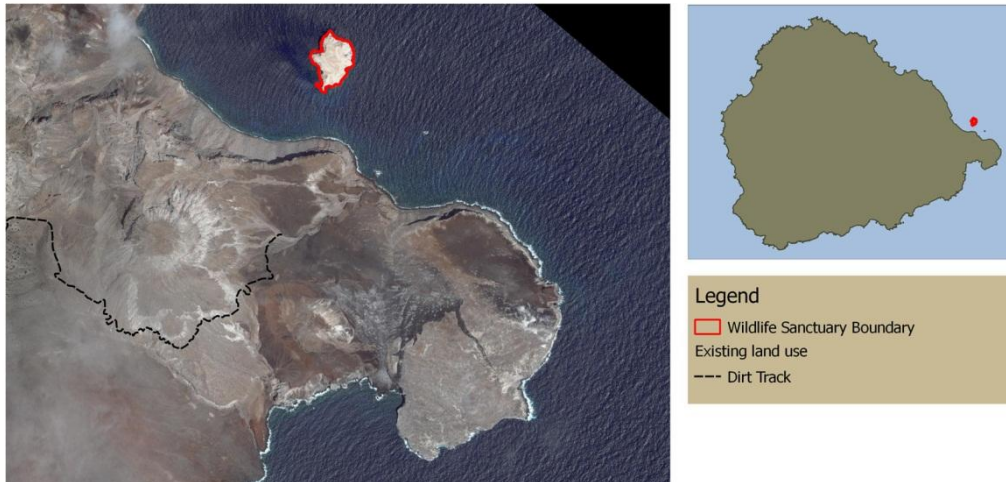
Part III

Sanctuary

8. Boatswain Bird Island Sanctuary:

An area comprising the entire land area of the island land mass known as Boatswain Bird Island, from sea level to the summit of the plateau.

Site map S1



Part IV

Area of Historical Interest

9. Turtle Ponds Area of Historical Interest:

An area comprising the ruins of two 19th century man-made turtle ponds in Georgetown adjacent to Long Beach.

Site Map AHI



Made by the Governor this 28th day of July, 2014.

Roy Burke
Chief Secretary of St. Helena

EXPLANATORY NOTE

(This Explanatory Note does not form part of the Order)

This Order establishes 6 nature reserves, 1 sanctuary and 1 area of historical interest around Ascension Island. The national protected areas are set out in the schedule using identifying GPS markers to mark out the boundaries, additionally they are identified and marked out in ordnance maps available to the public. Green Mountain national Park is included to bring all protected areas under one order. All coordinates are referred to the World Geodetic System 1984 in the Universal Transverse Mercator projection.