



INFRASTRUCTURE UPDATE

In this weeks article The Facilities Management Office of the AIG is providing readers with an update on the landslide repairs on Green Mountain.



Babcock completed their electrical works on the mountain recently, allowing us to start our hillside stabilisation and access repair works on Monday 8th August.

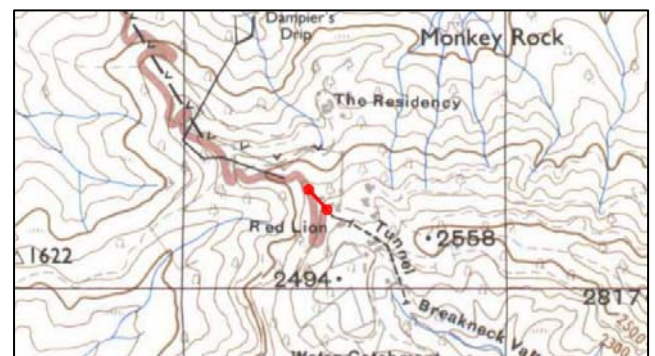
Construction is now in full flow and access through the construction site is prohibited to all but site operatives. Emergency and essential access can be arranged by contacting Peter Williams who is the Site Manager. Peter can be contacted during working hours on 6138 (FM office) or 4590 (site office).



Please obey all signs and barriers as they are in place to protect the public and our workforce.

How can I access Green Mountain?

An alternative access is available on foot to those of you who wish to visit Green Mountain while the works are in progress. The path leads from the Mountain Road (a few hundred metres above the turn off to The Residency), up to Olive Cottage and then up the steps to the viewing platform near Red Lion. Access beyond this point is possible by going through the gates into the picnic area and taking the steps on the right that lead back onto the track above Red Lion.



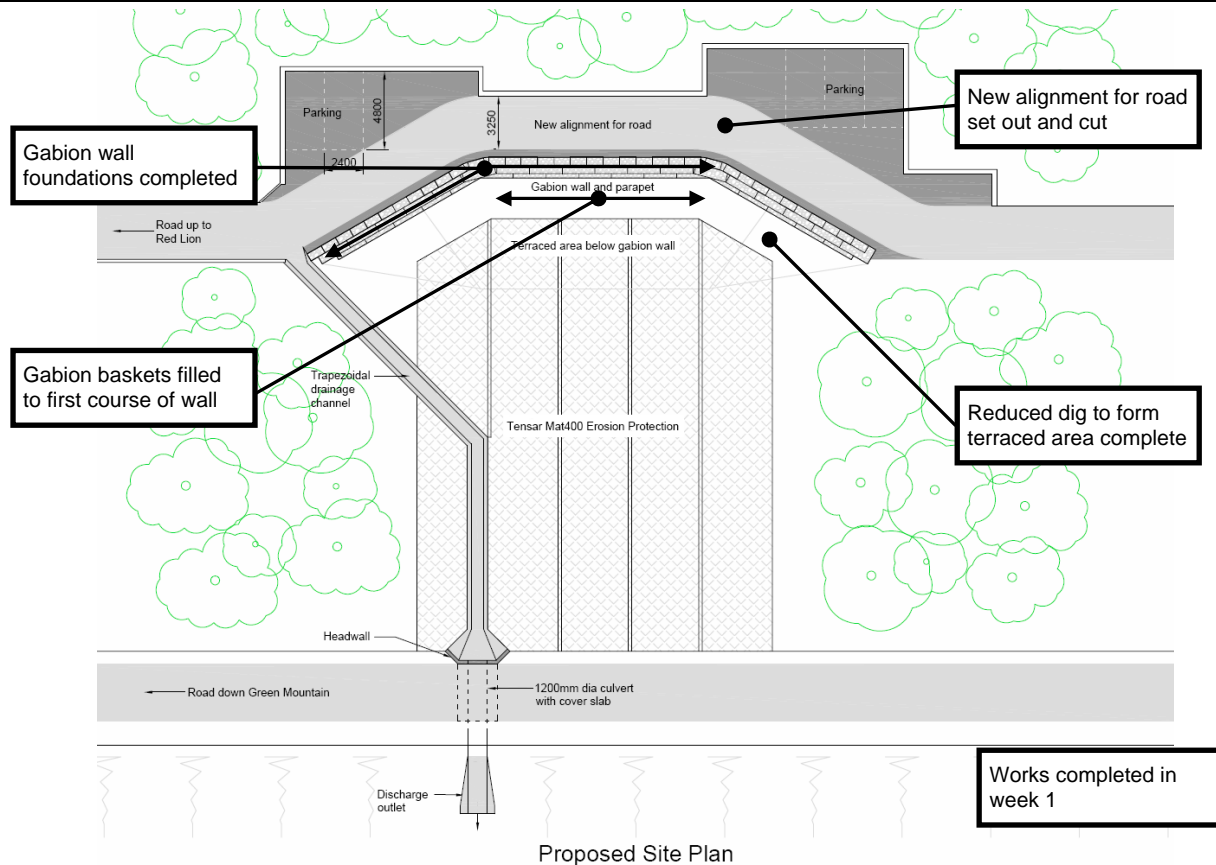
We have erected signs on the route to assist people following the new trail. The route is fairly steep through the banana palms just below Olive Cottage. Walkers should only use this route if they are prepared for a short scramble.



Many thanks to a machete-wielding, and somewhat scary looking, Stedson Stroud who emerged from the undergrowth having cleared the final part of the route.



INFRASTRUCTURE UPDATE



The works so far...



At the end of the first week the lads had made excellent progress, completing the reduced dig to remove the area of damaged road and form the terraced area in front of the gabion wall.

Having constructed a solid working platform, the trenching and hardcore bedding layer for the

gabion wall were constructed. Gabion baskets have been made up and placed along 24 metres of the bottom course of the wall. Of this, 14 metres have now been hand packed with locally harvested stone.



We will continue to give you regular updates on progress in future issues of "The Islander".